

experience a little resistance when trimming the moustache area,

where hair is thicker and grows in many different directions.

- Never switch the trimmer off whilst in the hair.

USING THE TRIMMER WITHOUT THE COMB GUIDE

- Using the trimmer without the comb guide
- The trimmer can also be used for detailing/shaping around the edge of the beard.



- To remove the comb guide, place two fingers either side of the wheel and gently pull to unclick the guide.

- Pull the guide up and away from the trimmer unit.

ATTACHING THE COMB GUIDE TO THE TRIMMER

- Slide the trimmer head under the back lip of the guide.
- The guide should rest on the head,
- Click the guide into position by gently pressing the wheel against the unit.
- The guide should click into a secure position.



ADJUSTABLE BEARD TRIMMER TOP TIPS

- Use on clean, dry hair.
- If possible, when using for the first time, try and grow your facial hair for at least 3 days before cutting. This will give you a better result, as your facial hair will feel thicker.
- Set the cutting length as required.
- It is always best to start cutting with a longer length first, then trim again if the length is longer than desired.
- Hold the trimmer against the hair. Where possible try to hold the trimmer at 90° to the face for best results.
- Move the trimmer upwards through the hair, a little at a time, against the direction of hair growth.
- The beard trimmer will work most effectively when cutting through the hair at its own speed – never force through the hair. You may experience a little resistance when trimming the moustache area, where hair is thicker and grows in many different directions.
- Never switch the trimmer off whilst in the hair.

CLEANING & MAINTENANCE

- Regular cleaning will maintain the high performance of your adjustable beard trimmer.

- Switch off and remove the power cord if connected.

- Detach the comb guide by gently lifting the front of the comb guide from both sides and flipping it over to the back of the unit and locking it into position by clicking it securely onto the fastener on the back of the handle.
- Use the cleaning brush supplied to brush away any hair and debris. Do not use a sharp object to clean the trimmer blade.
- The blades can be removed to aid cleaning.
- To remove the blades hold the handle of the adjustable beard trimmer with one hand, place your thumb underneath the blades and push the blades away from the handle.
- Gently blow away any hair trapped beneath the blades.
- The blades can be rinsed under the tap. After rinsing the blades they may need to be oiled. See oiling instructions below.
- Ensure the blades are dry before reattaching to the trimmer body.
- Ensure you clean the blades after each use and before storing away.
- It is highly recommended to oil the blades from time to time with the oil provided. This ensures optimum cutting performance. For the first use you will need to use the oil supplied with the product, unscrew the cap and cut off the very end of the plastic tube

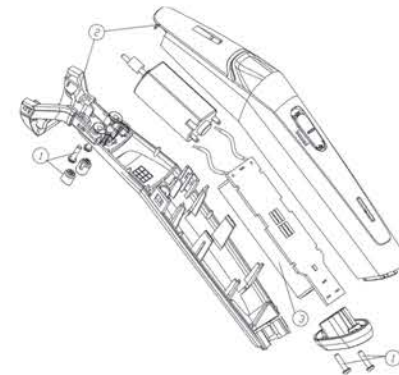
with a pair of scissors to release the oil. To oil the blades ensure the unit is switched on. Gently squeeze the oil tube and apply 2 drops of oil onto the blades. Leave the unit on for a further few seconds to allow the oil to thoroughly spread the length of the blades. Switch off the unit and remove any excess oil by gently dabbing with a cloth.

BATTERY REMOVAL

1. Using a small Phillips head screwdriver, remove the screws at the back of the trimmer.
2. Remove the bottom housing and cut the battery out. Bring the battery to the nearest collection center for proper disposal. DO NOT throw the battery into the normal municipal waste system.



CONTAINS LITHIUM ION BATTERY. MUST BE COLLECTED, RECYCLED OR DISPOSED OF PROPERLY. DO NOT DISPOSE OF IN THE MUNICIPAL WASTE.



IMPORTANT SAFETY INSTRUCTIONS

When using electrical appliances, especially when children are present, basic safety precautions should always be taken, including the following:

READ ALL INSTRUCTIONS BEFORE USING

KEEP AWAY FROM WATER

DANGER — Any appliance is electrically live, even when the switch is off.

To reduce the risk of death or injury by electric shock:

1. Unplug this appliance before cleaning.
2. Do not place or store appliance where it can fall or be pulled into a tub or sink.
3. Do not use while bathing or in a shower.
4. Do not place in, or drop into water or other liquid.
5. Do not reach for an appliance that has fallen into water. Unplug immediately.
6. Except when charging, always unplug this appliance from electrical outlet immediately after using.
7. Never operate the adaptor if the specification is out of the rating.

DO NOT REACH INTO THE WATER WARNING

— To reduce the risk of burns, electric shock, fire, or injury to persons:

1. This appliance should never be left unattended when plugged in. Do not pull, twist, or wrap line cord around appliance.
2. This appliance should not be used by, on, or near children or individuals with certain disabilities.
3. Use this appliance only for its intended purpose as described in this manual. Do not use attachments not recommended by the manufacturer. Do not use an extension cord to operate this appliance.
4. Never operate this appliance if it has a damaged cord or plug, or if it is not working properly, if it has been dropped or damaged, or dropped into water. Return the appliance to a service center for examination and repair.
5. Keep the cord away from heated surfaces.
6. Never drop or insert any object into any opening on this appliance.
7. Do not place appliance on any surface while it is operating.
8. Do not use this appliance with a damaged or broken comb or with teeth missing from the blades as injury may occur. Before use, make certain blades are aligned properly. (See “Care of your trimmers”).
9. Do not use outdoors or operate where aerosol (spray) products are being used or where oxygen is being administered.

10. Never operate the appliance with the air openings blocks or while on a soft surface, such as a bed or couch, where the air openings may be blocked. Keep the air openings free of lint, hair, and the like.

11. Always attach plug to appliance first, then to outlet. To disconnect, turn all controls to “OFF” then remove plug from outlet.

12. Avoid skin contact with moving blades.

13. Do not short the polarity (output cord), ensure jack is plugged into the unit before plugged the adaptor into outlet.

14. This power unit is intended to be correctly oriented in vertical or floor mount position.

15. Be sure voltage is in correct voltage before plugging in.

16. For connection to a supply not in U.S.A, use an attachment plug adapter of the proper configuration for the power outlet.

17. CAN ICES-3(B)

Warning: Changes or modifications to this unit not expressly approved by the party responsible for compliance could void the user’s authority to operate the equipment.

USER MANUAL FOR ADAPTOR

BEFORE USING THE CLASS 2 POWER SUPPLY, READ THESE INSTRUCTIONS CAREFULLY. Rated input voltage: 100-240Vac, 50/60Hz, 0.2 A

Rated output: 5V DC ,1000mA

OPERATION

1. For dry location use only. Do not expose to rain.
2. When not in use, unplug unit completely.

3. Never operate this unit if the specification is out of the rating.

4. When using this unit, a warm temperature will be reached.

CAUTION

1. Risk of electric shock, dry location use only or do not expose to liquid, vapor, or rain.
2. Do not short the polarity (output cord).
3. Do not operate any appliance which has a damaged output cord or housing.
4. Always unplug the unit before cleaning or when not in use.
5. This power unit is intended to be correctly oriented in a vertical or floor mount position.
6. Be sure voltage is in correct voltage before plugging in.

SAVE THESE INSTRUCTIONS

USER MANUAL

The Barber Shop Pro Adjustable Beard Trimmer boasts ultra-precise length settings, ranging from 1mm to 12mm perfect for every-day beard maintenance.

The protective comb guide helps deliver consistent cutting, whilst removing the guide allows for close cut edging and detailing. Take control of your beard.

FEATURES

- Cordless operation for sustained power for flexibility

LIMITED THREE YEAR WARRANTY

Conair will repair or replace (at our option) your unit free of charge for 36 months from the date of purchase if the appliance is defective in workmanship or materials.

To obtain service under this warranty, return the defective product to the service centre listed below that is nearest you, together with your purchase receipt and \$7.50 for postage and handling. In the absence of a purchase receipt, the warranty period shall be 36 months from the date of manufacture.

ANY IMPLIED WARRANTIES, OBLIGATIONS, OR LIABILITIES, INCLUDING BUT NOT LIMITED TO THE IMPLIED WARRANTY OF MERCHANTABILITY AND FITNESS FOR A PARTICULAR PURPOSE, SHALL BE LIMITED IN DURATION TO THE 36 MONTH DURATION OF THIS WRITTEN, LIMITED WARRANTY.

IN NO EVENT SHALL CONAIR BE LIABLE FOR ANY SPECIAL, INCIDENTAL, OR CONSEQUENTIAL DAMAGES FOR BREACH OF THIS OR ANY OTHER WARRANTY, EXPRESS OR IMPLIED, WHATSOEVER.

This warranty gives you specific legal rights, and you may also have other rights, which vary from province to province.

SERVICE CENTRE:

CONAIR CONSUMER PRODUCTS ULC

100 Conair Parkway

Woodbridge Ontario, L4H 0L2

©2020 CONAIR CONSUMER PRODUCTS ULC

For more information on any Conair product call:

1-855-926-6247

Visit our Web site: www.conaircanada.ca

Consumer Call Centre E-mail:

Consumer_Canada@Conair.com

19CN035067

IB-16682

The
BARBER SHOP
- PRO SERIES -
Est. 1959
PAR CONAIR

Adjustable Beard Trimmer



Have a Question?

Please do not return this product to the retailer.

Call Us First!

Our customer service and product experts are ready to answer ALL your questions.

Please call our TOLL-FREE customer service number at: 1-855-926-6247

or visit us online at

www.conaircanada.ca

Model GMT890C

Instruction Booklet

CONAIR *for men*

CORDLESS OPERATION

- Insert the adaptor with USB cable into the base of the appliance into a suitable mains socket and switch on. The red LED will appear when the adaptor is correctly inserted into the appliance and connected to the mains. The charge indicator will turn green once the appliance charge is complete.

PREPARATION FOR USE

- Always inspect the appliance before use for noticeable signs of damage. Do not use if damaged.
- Ensure the blades are free from hair and debris and that they are properly oiled (refer to the ‘Oiling Instructions’ for further information).
- Ensure the appliance is sufficiently charged.
- Use on clean, dry hair that has been combed until tangle free.

USING THE LENGTH CONTROL DIAL

The length control dial allows you to adjust the comb guide to change the cutting length of your trimmer. You’ll need to experiment to find your preferred length, but as a guide, 1mm will give you a very short beard and 12mm will be thicker and longer.

- Select a cutting length (1-12mm) using the dial on the front of the trimmer. Turning the dial clockwise will increase the cutting length.

Turning it anti-clockwise will decrease the cutting length.

- Once you have selected your desired cutting length, the guide automatically locks into position for a guaranteed, even cut.
- Switch the trimmer on by sliding the power button up, the blades will start to move and you can begin trimming.

CUTTING PERFORMANCE

- Use on clean, dry hair.
- If possible, when using for the first time, try and grow your facial hair for at least 3 days before cutting. This will give you a better result, as your facial hair will feel thicker.
- Set the cutting length as required.
- It is always best to start cutting with a longer length first, then trim again if the length is longer than desired.
- Hold the trimmer against the hair. Where possible try to hold the trimmer at 90° to the face for best results.
- Move the trimmer upwards through the hair, a little at a time, against the direction of hair growth.
- The beard trimmer will work most effectively when cutting through the hair at its own speed – never force through the hair. You may